



In the Land of Beginnings  
Activities for the Whole Family

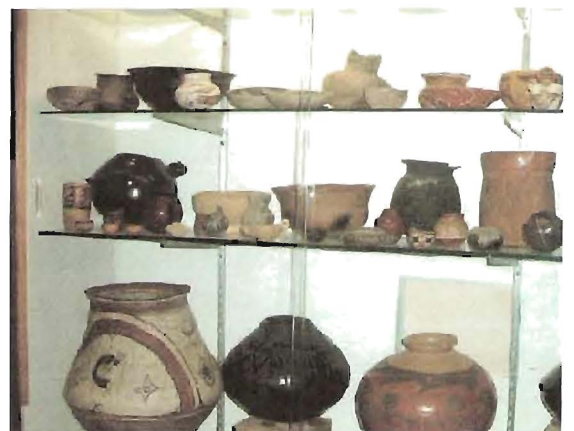
ONE OF MANY SITES ON THE HISTORIC  
ALBEMARLE TOUR, NC'S OLDEST SELF-GUIDED  
HERITAGE TRAIL

# FRISCO NATIVE AMERICAN MUSEUM & NATURAL HISTORY CENTER

*The museum contains a nationally-recognized collection of Native American artifacts and displays from natives across the United States and Canada as well as exhibits featuring the original inhabitants of Hatteras Island.*

## SPECIAL EVENTS/PROGRAMS

- ★ Maritime Forest and Nature Trail with Exhibits Plant Labels & Special Programs for Visually Impaired Persons (VIPs)
- ★ Scheduled Programs and Activities for Schools, Scouts, Seniors and Other Special Interest Groups
- ★ Annual Inter-Tribal Powwow, *Journey Home* in April - selected as a Top 20 Event by the Southeast Tourism Society!
- ★ Bird Observation Areas with Inter-Active Family Activities
- ★ Art Gallery, Book Store, Gift Shop with Elegant Authentic Native American Crafts
- ★ Natural History Center with Live and Fossil Exhibits
- ★ Handicap Accessible



OPEN ALL YEAR  
Tuesday—Sunday  
11 am—5 pm  
Mondays by Appointment  
*Winter Hours Adjusted*

\$3 Seniors \$5 Individuals \$15 Family

## NATURE TRAILS

The museum includes several acres of maritime forest with beautifully serene trails and natural exhibits.

Special programs for schools and other groups are available as well as exploration of the nature trail fossil pile. A screened pavilion overlooks a large pond, providing an ideal place for group activities, canoeing, kayaking, and picnic lunches.

The museum's **nature trail** is part of the *North Carolina Mountains to the Sea* trail system featuring special provisions for visually impaired persons (VIP's), including large print trail guides and etched tactile signs.

The museum's annual Powwow is celebrated on the nature trails, giving participants an opportunity to feel they have stepped back in time!



### Nearby Accommodations:

**Hatteras Island** - located on Coastal NC Highway 12 with more than 1,000 rental cottages and motel rooms

**Outer Banks**—located on US 264 & 64 with more than 2,900 hotel rooms

**Elizabeth City**—located on US 17 with more than 650 hotel rooms

### Welcome Centers:

**Outer Banks Visitors Centers**—US 64, US 158 Bypass, & Hwy. 12

**Tyrrell County Visitors Center**—US 64 at Columbia

**Currituck-Outer Banks Welcome Center**—Hwy. 168



*On the Outer Banks of NC*

## Frisco Native American Museum & Natural History Center

P O Box 399  
Frisco, North Carolina 27936

Phone: 252-995-4440

Fax: 252-995-4030

[www.nativeamericanmuseum.org](http://www.nativeamericanmuseum.org)